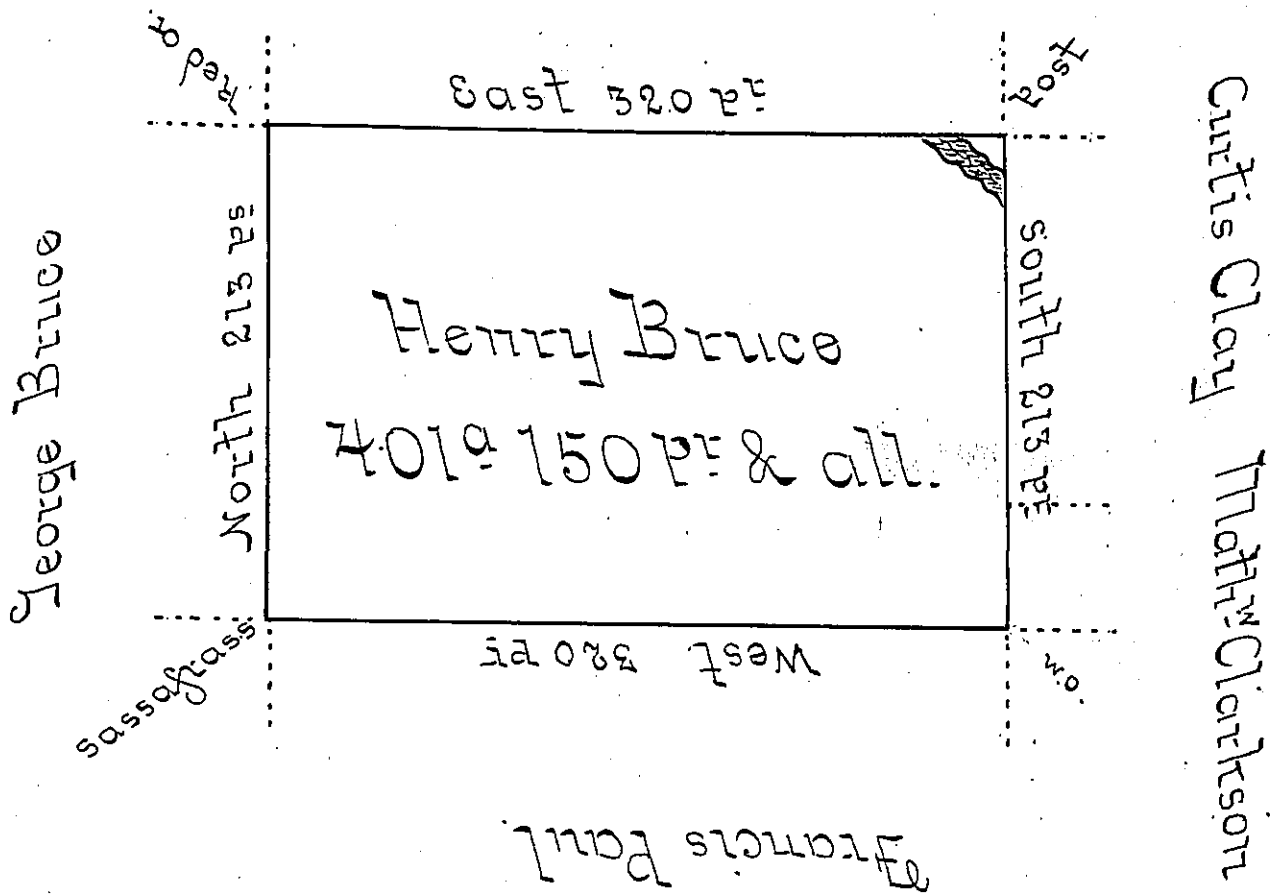


John Beals



Situate on the west side of French Creek in Allegheny County Containing 401 Acres and 150 P^e and Allowance of six P^e Cent for Roads &c Surveyed the 15th day of October 1797. In Pursuance of a Warrant dated the 10th day of ~~Sept~~ April 1793

Wm Power D.H.S.

To Daniel Brodhead Esq^e }
 Surveyor General - }

IN TESTIMONY that the above is a copy of the original remaining on file in the Department of Internal Affairs of Pennsylvania, made conformably to an Act of Assembly approved the 16th day of February, 1833, I have hereunto set my Hand and caused the Seal of said Department to be affixed at Harrisburg, this — second — day of — July — 1901.

James W. Latta
 Secretary of Internal Affairs.